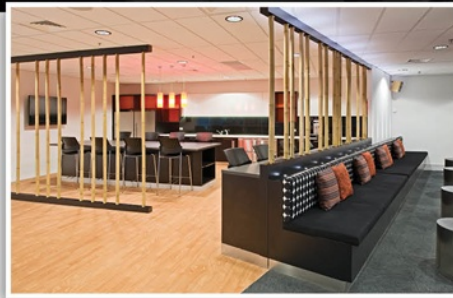


Welcome to the BEYOND projects e-newsletter, where you'll be updated on all the latest news, trends and opinions brought to you by Formula Interiors.

# BEYOND projects



## FORMULA INTERIORS *Mills Oakley Lawyers*

Mills Oakley Lawyers of level 6, 530 Collins Street, Melbourne are ready to tell anyone who wants to listen about how delighted they are with the work carried out by Formula Interiors. They were particularly impressed that the project came in on time and on budget without any compromise on quality.

The following is an extract from a letter written by The Informational Technology Manager of Mills Oakley Lawyers, Mr Josh Piper.

"We are delighted with the fit out at our new premises, the design and layout suit us perfectly and the quality of the materials and workmanship is outstanding. Throughout the process you and the team were courteous and happy to answer any of our queries while

working with us to oversee the project and ensure all our needs were met. The ability of you and the Formula Interiors team to meet our needs while working within a tight timeframe and strict budget was critical and you did an exceptional job.

It was such a pleasure to work with the team at Formula Interiors, I would highly recommend you to anyone looking to refurbish or fit out office space.

Formula Interiors know the relationships established with their clients, and how they manage their expectations, are critical elements to their success. Testimony to this approach is the volume of repeat projects performed by Formula Interiors".



### INTRODUCING RICHARD SISSON

Richard Sisson started his career as an apprentice carpenter with Eveready Partitions (now Formula Interiors) in 1982, straight out of high school.

From the beginning he was exposed to all areas of Eveready Partitions, from onsite and factory activities to project planning in the office environment. Richard's management skills were recognised early on by senior management, and just two years into his apprenticeship he was seconded into the office to begin a career in management.

27 years on, Richard holds the position of Victorian Sales and Estimating manager for Formula Interiors. While Richard acknowledges the strong reputation and decades of extraordinary work delivered by Eveready Partitions, he has fully embraced the new ownership structure under the Formula Interiors' brand and the innovative and exciting opportunities it brings on a National Level.

As a talented sportsman Richard represented Australia in the junior baseball league, Victoria as a senior baseball player and he was also a representative player in the National Baseball league. As a Victorian he is also passionate about AFL and in particular St Kilda a team he has followed forever. Married with two daughters who prefer dancing and tennis, Richard is content with his life. The only thing missing according to Richard, is a St Kilda premiership!

Creating and maintaining winning environments, right across Australia.

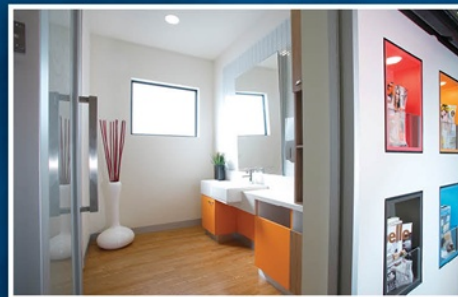
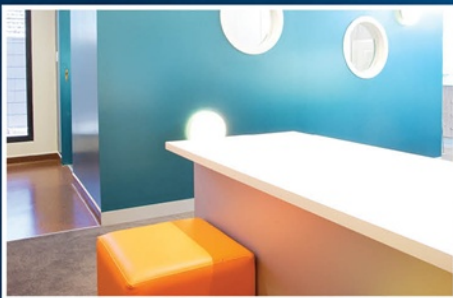
"Formula Interiors is delighted to welcome Clinic Solutions to its professional family of companies"

## NEW ACQUISITION

Formula Interiors has added another dimension to its already strong network of skills and experience in creating winning environments across a broad range of commercial, professional and corporate businesses. Acquiring Clinic Solutions in the latter part of last year has opened up new opportunities. Clinic Solutions with 31 years experience specialising in medical and dental fitouts, is the latest company to be acquired by Formula Interiors.

When it comes to economical dental re-fits or brand new, all encompassing fitouts, Clinic Solutions has become the industry standard for which quality, affordability and reliability are measured.

Clinic Solutions is among a very small group of specialty dental fitout companies in Australasia and is proud of its reputation for producing the highest quality dental cabinetry since 1980. Formula Interiors is delighted to welcome Clinic Solutions to its professional family of companies.



Our tip for this issue: Be responsible for not only what you say, but how you are heard!  
"The single biggest problem in communication is the illusion that it has taken place"  
- George Bernard Shaw



Adelaide | Brisbane | Canberra | Melbourne | Perth | Sydney

P 1300 004 004 | F 1300 404 404 | E [info@formulainteriors.com.au](mailto:info@formulainteriors.com.au)

[www.formulainteriors.com.au](http://www.formulainteriors.com.au)

